



Power contactor, AC-3 80 A, 37 kW / 400 V 230 V AC, 50 Hz 3-pole, Size S3 Screw terminal !!! Phased-out product !!! Successor is SIRIUS 3RT2 Preferred successor type is >>3RT2038-1AP00<<

product brand name	SIRIUS
product designation	power contactor
General technical data	
size of contactor	S3
insulation voltage rated value	1 000 V
degree of pollution	3
surge voltage resistance rated value	6 kV
maximum permissible voltage for safe isolation between coil and main contacts acc. to EN 60947-1	690 V
protection class IP <ul style="list-style-type: none">• on the front• of the terminal	IP20; IP20 on the front with cover / box terminal IP00
shock resistance at rectangular impulse <ul style="list-style-type: none">• at AC	6.8g / 5 ms, 4g / 10 ms
shock resistance with sine pulse <ul style="list-style-type: none">• at AC	10.6g / 5 ms, 6.2g / 10 ms
mechanical service life (operating cycles) <ul style="list-style-type: none">• of contactor typical• of the contactor with added electronically optimized auxiliary switch block typical• of the contactor with added auxiliary switch block typical	10 000 000 5 000 000 10 000 000
reference code acc. to IEC 81346-2	Q
Substance Prohibitation (Date)	01.05.2012 00:00:00
Ambient conditions	
installation altitude at height above sea level maximum	2 000 m
ambient temperature <ul style="list-style-type: none">• during operation• during storage	-25 ... +60 °C -55 ... +80 °C
Main circuit	
number of poles for main current circuit	3
number of NO contacts for main contacts	3
number of NC contacts for main contacts	0
operational current <ul style="list-style-type: none">• at AC-1 at 400 V at ambient temperature 40 °C rated value• at AC-1<ul style="list-style-type: none">— up to 690 V at ambient temperature 40 °C rated value	120 A 120 A





— up to 690 V at ambient temperature 60 °C rated value	100 A
— up to 1000 V at ambient temperature 40 °C rated value	60 A
— up to 1000 V at ambient temperature 60 °C rated value	50 A
• at AC-3	
— at 400 V rated value	80 A
— at 690 V rated value	58 A
— at 1000 V rated value	30 A
• at AC-4 at 400 V rated value	66 A
connectable conductor cross-section in main circuit at AC-1	
• at 60 °C minimum permissible	35 mm ²
• at 40 °C minimum permissible	50 mm ²
operational current for approx. 200000 operating cycles at AC-4	
• at 400 V rated value	34 A
• at 690 V rated value	22 A
operational current	
• at 1 current path at DC-1	
— at 24 V rated value	100 A
— at 110 V rated value	9 A
• with 2 current paths in series at DC-1	
— at 24 V rated value	100 A
— at 110 V rated value	100 A
• with 3 current paths in series at DC-1	
— at 24 V rated value	100 A
— at 110 V rated value	100 A
operational current	
• at 1 current path at DC-3 at DC-5	
— at 24 V rated value	40 A
— at 110 V rated value	2.5 A
• with 2 current paths in series at DC-3 at DC-5	
— at 24 V rated value	100 A
— at 110 V rated value	100 A
• with 3 current paths in series at DC-3 at DC-5	
— at 24 V rated value	100 A
— at 110 V rated value	100 A
operating power	
• at AC-1	
— at 230 V at 60 °C rated value	38 kW
— at 400 V rated value	66 kW
— at 690 V rated value	114 kW
— at 690 V at 60 °C rated value	114 kW
— at 1000 V at 60 °C rated value	82 W
• at AC-2 at 400 V rated value	37 kW
• at AC-3	
— at 230 V rated value	22 kW
— at 400 V rated value	37 kW
— at 500 V rated value	45 kW
— at 690 V rated value	55 kW
— at 1000 V rated value	37 W
operating power for approx. 200000 operating cycles at AC-4	
• at 400 V rated value	17.9 kW
• at 690 V rated value	21.1 kW
thermal short-time current limited to 10 s	760 A
no-load switching frequency	
• at AC	5 000 1/h


operating frequency	
• at AC-1 maximum	900 1/h
• at AC-2 maximum	400 1/h
• at AC-3 maximum	1 000 1/h
• at AC-4 maximum	300 1/h
Control circuit/ Control	
type of voltage of the control supply voltage	AC
control supply voltage at AC	
• at 50 Hz rated value	230 V
control supply voltage frequency	
• 1 rated value	50 Hz
operating range factor control supply voltage rated value of magnet coil at AC	
• at 50 Hz	0.8 ... 1.1
apparent pick-up power of magnet coil at AC	270 V·A
inductive power factor with closing power of the coil	0.68
apparent holding power of magnet coil at AC	22 V·A
inductive power factor with the holding power of the coil	0.27
closing delay	
• at AC	17 ... 90 ms
opening delay	
• at AC	10 ... 25 ms
arcing time	10 ... 15 ms
Auxiliary circuit	
number of NC contacts for auxiliary contacts instantaneous contact	0
number of NO contacts for auxiliary contacts instantaneous contact	0
operational current at AC-12 maximum	10 A
operational current at AC-15	
• at 230 V rated value	6 A
• at 400 V rated value	3 A
operational current at DC-12	
• at 60 V rated value	6 A
• at 110 V rated value	3 A
• at 220 V rated value	1 A
operational current at DC-13	
• at 24 V rated value	10 A
• at 60 V rated value	2 A
• at 110 V rated value	1 A
• at 220 V rated value	0.3 A
contact reliability of auxiliary contacts	1 faulty switching per 100 million (17 V, 1 mA)
UL/CSA ratings	
contact rating of auxiliary contacts according to UL	A600 / Q600
Short-circuit protection	
design of the fuse link	
• for short-circuit protection of the main circuit	
— with type of coordination 1 required	fuse gL/gG: 250 A
— with type of assignment 2 required	fuse gL/gG: 160 A
• for short-circuit protection of the auxiliary switch required	fuse gL/gG: 10 A
Installation/ mounting/ dimensions	
fastening method	screw and snap-on mounting onto 35 mm and 75 mm standard mounting rail
• side-by-side mounting	Yes
height	146 mm
width	70 mm
depth	139 mm

required spacing for grounded parts at the side	6 mm	
Connections/ Terminals		
type of electrical connection <ul style="list-style-type: none">• for main current circuit• for auxiliary and control circuit	screw-type terminals screw-type terminals	
type of connectable conductor cross-sections <ul style="list-style-type: none">• for main contacts<ul style="list-style-type: none">— solid— stranded— solid or stranded— finely stranded with core end processing— finely stranded without core end processing• at AWG cables for main contacts	2x (2.5 ... 16 mm²) 2x (10 ... 50 mm²) 2x (2,5 ... 16 mm²) 2x (2.5 ... 35 mm²) 2x (10 ... 35 mm²) 2x (10 ... 1/0)	
type of connectable conductor cross-sections <ul style="list-style-type: none">• for auxiliary contacts<ul style="list-style-type: none">— solid— finely stranded with core end processing• at AWG cables for auxiliary contacts	2x (0.5 ... 1.5 mm²), 2x (0.75 ... 2.5 mm²), max. 2x (0.75 ... 4 mm²) 2x (0.5 ... 1.5 mm²), 2x (0.75 ... 2.5 mm²) 2x (20 ... 16), 2x (18 ... 14), 1x 12	
Certificates/ approvals		
General Product Approval	EMC	Declaration of Conformity

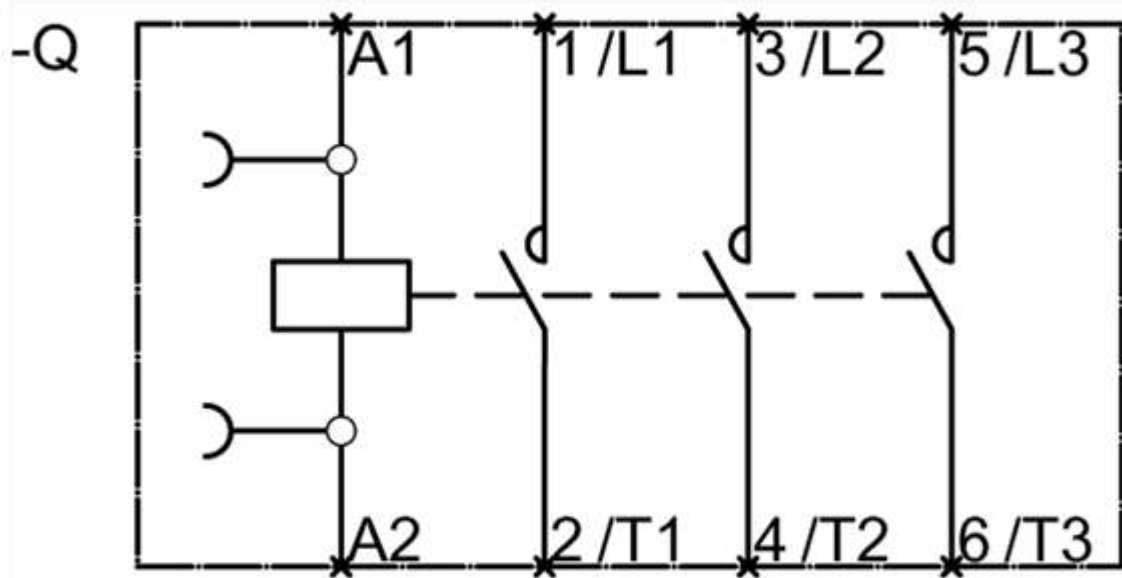
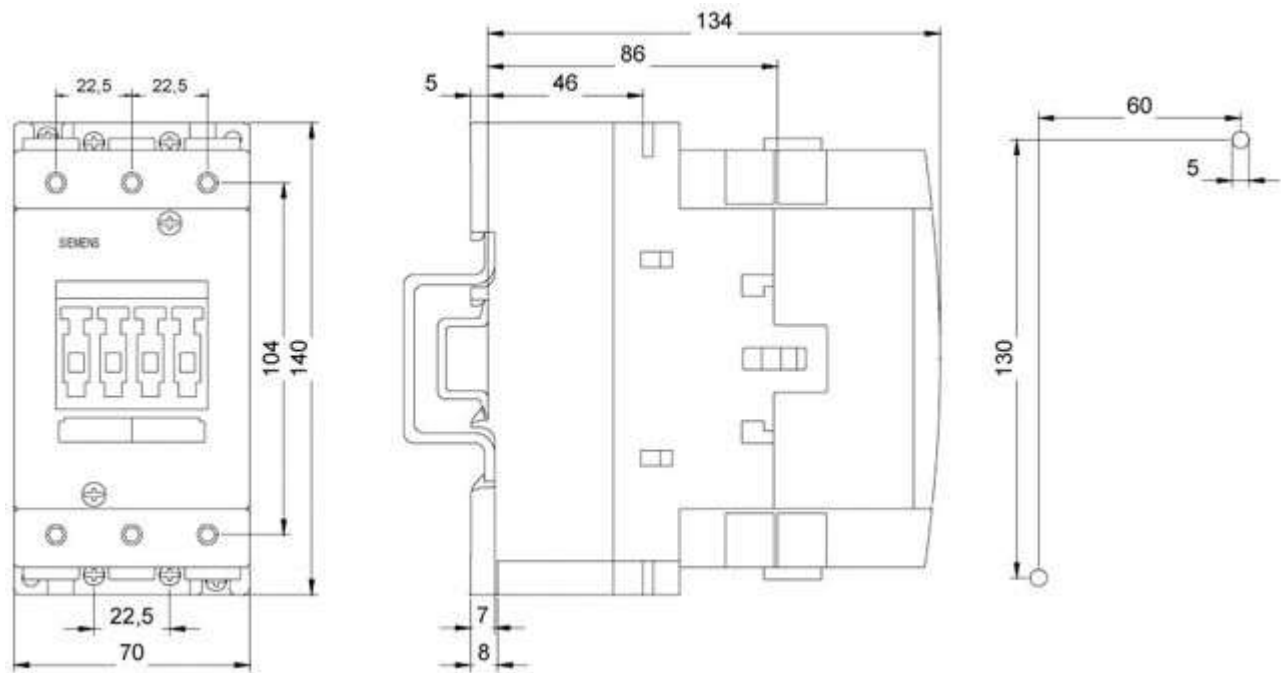


[Miscellaneous](#)

Declaration of Conformity	Test Certificates	Marine / Shipping
 EG-Konf.	Type Test Certificates/Test Report	Special Test Certificate
		 ABS
		 LRS
		 RINA

Marine / Shipping	other	Railway
 RMRS	Miscellaneous	Confirmation
	Confirmation	Miscellaneous
		Special Test Certificate

Further information
Information- and Downloadcenter (Catalogs, Brochures,...) https://www.siemens.com/ic10
Industry Mall (Online ordering system) https://mall.industry.siemens.com/mall/en/en/Catalog/product?mlfb=3RT1045-1AP00
Cax online generator http://support.automation.siemens.com/WW/CAXorder/default.aspx?lang=en&mlfb=3RT1045-1AP00
Service&Support (Manuals, Certificates, Characteristics, FAQs,...) https://support.industry.siemens.com/cs/ww/en/ps/3RT1045-1AP00
Image database (product images, 2D dimension drawings, 3D models, device circuit diagrams, EPLAN macros, ...) http://www.automation.siemens.com/bilddb/cax_de.aspx?mlfb=3RT1045-1AP00&lang=en
Characteristic: Tripping characteristics, I ² t, Let-through current https://support.industry.siemens.com/cs/ww/en/ps/3RT1045-1AP00/char
Further characteristics (e.g. electrical endurance, switching frequency) http://www.automation.siemens.com/bilddb/index.aspx?view=Search&mlfb=3RT1045-1AP00&objecttype=14&gridview=view1



last modified:

2/24/2021 